



REGIONAL SPECIALISED METEOROLOGICAL CENTRE-TROPICAL CYCLONES, NEW DELHI SPECIAL TROPICAL WEATHER OUTLOOK

DEMS-RSMC TROPICAL CYCLONES NEW DELHI DATED 18.09.2024

SPECIAL TROPICAL WEATHER OUTLOOK FOR NORTH INDIAN OCEAN (THE BAY OF BENGAL AND THE ARABIAN SEA) VALID FOR NEXT 168 HOURS ISSUED AT 0300 UTC OF 18.09.2024 BASED ON 0000 UTC OF 18.09.2024.

SUB: WELL MARKED LOW PRESSURE AREA OVER NORTHEAST MADHYA PRADESH & ADJOINING SOUTHWEST UTTAR PRADESH

THE DEPRESSION OVER NORTHEAST MADHYA PRADESH MOVED WEST-NORTHWESTWARDS AND WEAKENED INTO A WELL MARKED LOW PRESSURE AREA OVER NORTHEAST MADHYA PRADESH AND ADJOINING SOUTHWEST UTTAR PRADESH AT 000 UTC OF TODAY, THE 18TH SEPTEMBER 2024.

IT IS LIKELY TO MOVE FURTHER NEARLY WEST-NORTHWESTWARDS ACROSS NORTHEAST MADHYA PRADESH AND SOUTHWEST UTTAR PRADESH AND GRADUALLY WEAKEN INTO A LOW PRESSURE AREA DURING NEXT 24 HOURS.

AT 0000 UTC, AS PER INSAT 3DR IMAGERY, ASSOCIATED SCATTERED TO BROKEN LOW AND MEDIUM CLOUDS WITH EMBEDDED INTENSE TO VERY INTENSE CONVECTION LAY OVER NORTHWEST MADHYA PRADESH, WEST UTTAR PRADESH (MINIMUM CLOUD TOP TEMPERATURE MINUS 70-93 DEG CELSIUS) AND MODERATE TO INTENSE CONVECTION OVER UTTARAKHAND, HARYANA, DELHI, NORTHEAST RAJASTHAN, REST OF MADHYA PRADESH AND WEST NEPAL (MINIMUM CLOUD TOP TEMPERATURE MINUS 40-60 DEG CELSIUS).

ASSOCIATED MAXIMUM SUSTAINED WIND SPEED (MSW) IN ASSOCIATION WITH THE SYSTEM IS 15 KT GUSTING TO 25 KT. ESTIMATED CENTRAL PRESSURE IS 1000 HPA.

AT 0000 UTC, SATNA REPORTED LOWEST MEAN SEA LEVEL PRESSURE (MSLP) OF 1000.3 HPA, AND MAXIMUM WIND SPEED (MSW) OF 160°/03KT. JHANSI REPORTED MSLP OF 1000.6 HPA, MSW OF 50°/12KT. SAGAR REPORTED MSLP OF 1000.6 HPA, MSW OF 180°/02KT.

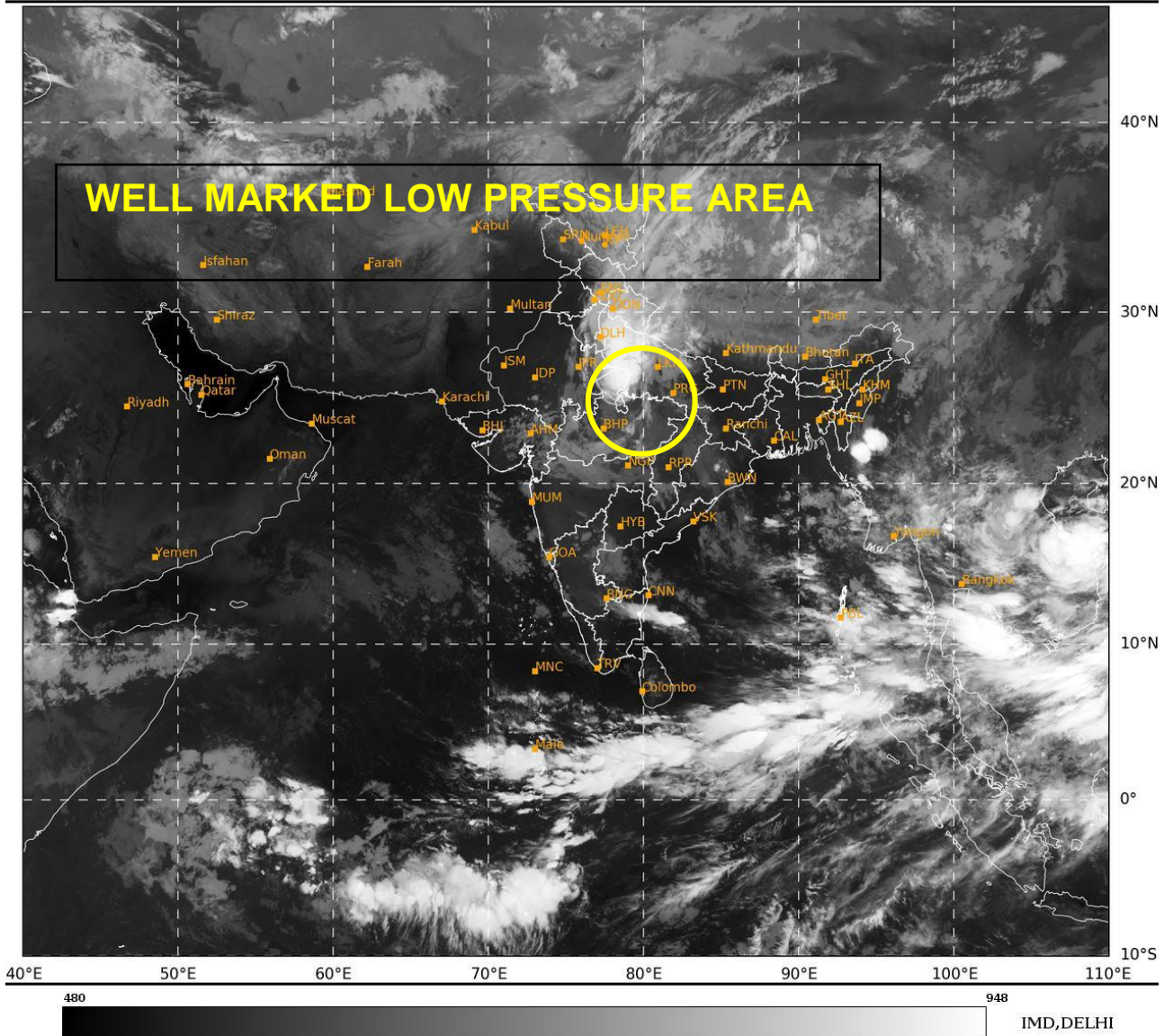
REMARKS:

MADDEN JULIAN OSCILLATION (MJO) INDEX HAS ENTERED PHASE 6 (UNFAVOURABLE). THE NCICS BASED FORECAST INDICATES PERSISTENCE OF WESTERLY WINDS (3-5 MPS) OVER CENTRAL PARTS OF INDIA WITH EASTERLY WINDS (3-5 MPS) OVER NORTHEASTERN PARTS OF INDIA. OTHER EQUATORIAL WAVES HAVE MOVED AWAY. ENVIRONMENTAL FEATURES ARE INDICATING GRADUAL WEAKENING OF SYSTEM.

CONSIDERING VARIOUS NUMERICAL MODELS FORECASTS FOR THE SYSTEM AND ENVIRONMENTAL FACTORS, IT IS LIKELY TO MOVE WEST-NORTHWESTWARDS ACROSS NORTHEAST MADHYA PRADESH AND SOUTHWEST UTTAR PRADESH AND GRADUALLY WEAKEN INTO A LOW PRESSURE AREA DURING NEXT 24 HOURS

**AKHIL SRIVASTAVA
SC.-D, RSMC NEW DELHI**

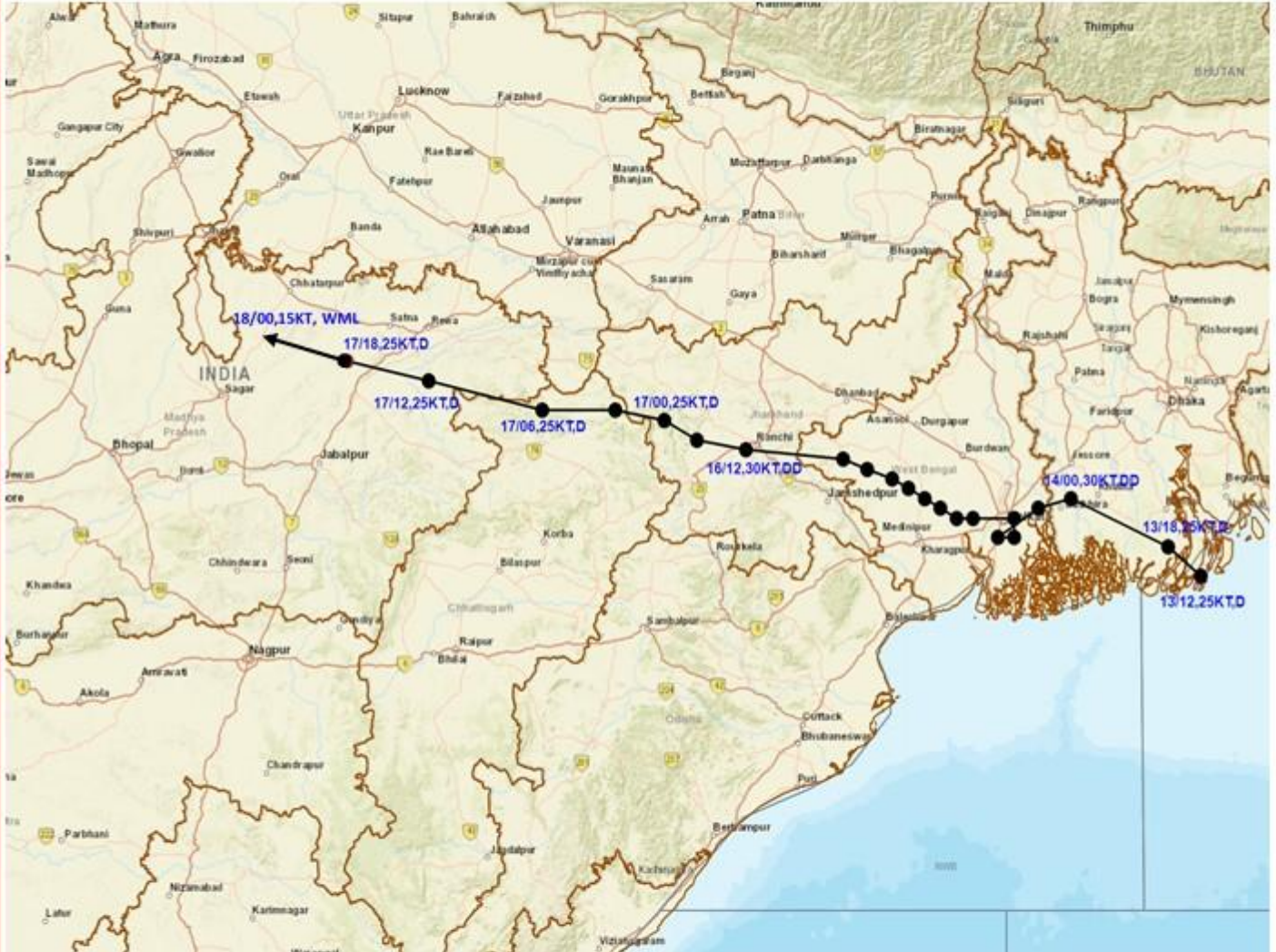
THIS IS LAST UPDATE IN ASSOCIATION WITH THIS SYSTEM. HOWEVER, REGULAR TROPICAL WEATHER OUTLOOK SHALL CONTINUE FROM RSMC NEW DELHI.



Cloud distribution: (a) Isolated: <25%, Scattered:25-50%, Broken: 51-75%, Solid:>75%, Convection Intensity: (a) Weak: Cloud Top Temperature (CTT) >-25°C, (b) Moderate: CTT: - 25°C to -40°C, (c) Intense: CTT: - 41°C to -70°C and (d) Very Intense: : Less than -70°C
PROBABILITY OF CYCLOGENESIS (FORMATION OF DEPRESSION):NIL: 0%, LOW: 1-33%, , MODERATE: 34-66% AND HIGH: 67-100%
This is a guidance Bulletin for WMO/ESCAP Panel Member countries. Visit respective National websites for Country specific Bulletins



OBSERVED TRACK OF DEEP DEPRESSION OVER NORTHEAST BAY OF BENGAL DURING 13TH - 18TH SEPTEMBER 2024.



DATE/TIME IN UTC
 IST=UTC + 0530
 L: LOW PRESSURE AREA
 WML: WELL MARKED LOW PRESSURE AREA
 D: DEPRESSION (17-27 KT)
 DD: DEEP DEPRESSION (28-33 KT)
 CS: CYCLONIC STORM (34-47 KT)
 SCS: SEVERE CYCLONIC STORM (48-63KT)
 VSCS: VERY SEVERE CYCLONIC STORM (64-89 KT)
 ESCS: EXTREMELY SEVERE CYCLONIC STORM (90-119 KT)
 SuCS: SUPER CYCLONIC STORM (≥ 120 KT)

- LESS THAN 34 KT
- 34-47 KT
- ≥ 48 KT
- OBSERVED TRACK
- FORECAST TRACK
- CONE OF UNCERTAINTY

Cloud distribution: (a) Isolated: <25%, Scattered:25-50%, Broken: 51-75%, Solid:>75%, Convection Intensity: (a) Weak: Cloud Top Temperature (CTT) >-25°C, (b) Moderate: CTT: - 25°C to -40°C, (c) Intense: CTT: - 41°C to -70°C and (d) Very Intense: : Less than -70°C
 PROBABILITY OF CYCLOGENESIS (FORMATION OF DEPRESSION):NIL: 0%, LOW: 1-33%, , MODERATE: 34-66% AND HIGH: 67-100%
 This is a guidance Bulletin for WMO/ESCAP Panel Member countries. Visit respective National websites for Country specific Bulletins

